

**GAPDH Antibody (clone B903M)**  
**Mouse Monoclonal Antibody**  
**Catalog # ALS15302****Specification****GAPDH Antibody (clone B903M) - Product Information**

Application	WB, IHC-P, ICC, E
Primary Accession	<a href="#">P04406</a>
Reactivity	Human, Rat, Rabbit, Pig, Goat, Bovine
Host	Mouse
Clonality	Monoclonal
Calculated MW	36kDa KDa
Dilution	WB~~1:1000 IHC-P~~N/A ICC~~N/A E~~N/A

**GAPDH Antibody (clone B903M) - Additional Information****Gene ID** 2597**Other Names**Glyceraldehyde-3-phosphate dehydrogenase, GAPDH, 1.2.1.12, Peptidyl-cysteine S-nitrosylase  
GAPDH, 2.6.99.-, GAPDH, GAPD**Target/Specificity**

Recognizes GAPDH. Species cross-reactivity: human, bovine, porcine, goat, rabbit and rat.

**Reconstitution & Storage**

May be stored at 4°C for short-term only. For long-term storage and to avoid repeated freezing and thawing, aliquot and store at -20°C. Aliquots are stable for at least 12 months at -20°C.

**Precautions**

GAPDH Antibody (clone B903M) is for research use only and not for use in diagnostic or therapeutic procedures.

**GAPDH Antibody (clone B903M) - Protein Information****Name** GAPDH {ECO:0000303|PubMed:2987855, ECO:0000312|HGNC:HGNC:4141}**Function**

Has both glyceraldehyde-3-phosphate dehydrogenase and nitrosylase activities, thereby playing a role in glycolysis and nuclear functions, respectively (PubMed:&lt;a href="http://www.uniprot.org/citations/11724794" target="\_blank"&gt;11724794&lt;/a&gt;, PubMed:&lt;a href="http://www.uniprot.org/citations/3170585" target="\_blank"&gt;3170585&lt;/a&gt;).

Glyceraldehyde-3-phosphate dehydrogenase is a key enzyme in glycolysis that catalyzes the first step of the pathway by converting D- glyceraldehyde 3-phosphate (G3P) into 3-phospho-D-glyceroyl phosphate (PubMed:&lt;a href="http://www.uniprot.org/citations/11724794" target="\_blank"&gt;11724794&lt;/a&gt;)

target="\_blank">11724794</a>, PubMed:<a href="http://www.uniprot.org/citations/3170585" target="\_blank">3170585</a>). Modulates the organization and assembly of the cytoskeleton (By similarity). Facilitates the CHP1- dependent microtubule and membrane associations through its ability to stimulate the binding of CHP1 to microtubules (By similarity). Component of the GAIT (gamma interferon-activated inhibitor of translation) complex which mediates interferon-gamma-induced transcript-selective translation inhibition in inflammation processes (PubMed:<a href="http://www.uniprot.org/citations/23071094" target="\_blank">23071094</a>). Upon interferon-gamma treatment assembles into the GAIT complex which binds to stem loop-containing GAIT elements in the 3'-UTR of diverse inflammatory mRNAs (such as ceruplasmin) and suppresses their translation (PubMed:<a href="http://www.uniprot.org/citations/23071094" target="\_blank">23071094</a>). Also plays a role in innate immunity by promoting TNF-induced NF-kappa-B activation and type I interferon production, via interaction with TRAF2 and TRAF3, respectively (PubMed:<a href="http://www.uniprot.org/citations/23332158" target="\_blank">23332158</a>, PubMed:<a href="http://www.uniprot.org/citations/27387501" target="\_blank">27387501</a>). Participates in nuclear events including transcription, RNA transport, DNA replication and apoptosis (By similarity). Nuclear functions are probably due to the nitrosylase activity that mediates cysteine S-nitrosylation of nuclear target proteins such as SIRT1, HDAC2 and PRKDC (By similarity).

### Cellular Location

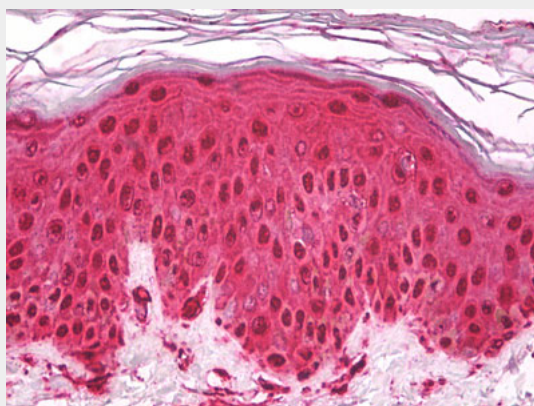
Cytoplasm, cytosol. Nucleus {ECO:0000250|UniProtKB:P04797}. Cytoplasm, perinuclear region. Membrane Cytoplasm, cytoskeleton {ECO:0000250|UniProtKB:P04797} Note=Translocates to the nucleus following S-nitrosylation and interaction with SIAH1, which contains a nuclear localization signal (By similarity). Postnuclear and Perinuclear regions (PubMed:12829261) {ECO:0000250|UniProtKB:P04797, ECO:0000269|PubMed:12829261}

### GAPDH Antibody (clone B903M) - Protocols

Provided below are standard protocols that you may find useful for product applications.

- [Western Blot](#)
- [Blocking Peptides](#)
- [Dot Blot](#)
- [Immunohistochemistry](#)
- [Immunofluorescence](#)
- [Immunoprecipitation](#)
- [Flow Cytometry](#)
- [Cell Culture](#)

### GAPDH Antibody (clone B903M) - Images



Anti-GAPDH antibody IHC of human skin.

### **GAPDH Antibody (clone B903M) - Background**

Has both glyceraldehyde-3-phosphate dehydrogenase and nitrosylase activities, thereby playing a role in glycolysis and nuclear functions, respectively. Participates in nuclear events including transcription, RNA transport, DNA replication and apoptosis. Nuclear functions are probably due to the nitrosylase activity that mediates cysteine S-nitrosylation of nuclear target proteins such as SIRT1, HDAC2 and PRKDC. Modulates the organization and assembly of the cytoskeleton. Facilitates the CHP1-dependent microtubule and membrane associations through its ability to stimulate the binding of CHP1 to microtubules (By similarity). Glyceraldehyde-3-phosphate dehydrogenase is a key enzyme in glycolysis that catalyzes the first step of the pathway by converting D-glyceraldehyde 3-phosphate (G3P) into 3-phospho-D- glyceroyl phosphate. Component of the GAIT (gamma interferon- activated inhibitor of translation) complex which mediates interferon-gamma-induced transcript-selective translation inhibition in inflammation processes. Upon interferon-gamma treatment assembles into the GAIT complex which binds to stem loop-containing GAIT elements in the 3'-UTR of diverse inflammatory mRNAs (such as ceruplasmin) and suppresses their translation.

### **GAPDH Antibody (clone B903M) - References**

Hanauer A.,et al.EMBO J. 3:2627-2633(1984).  
Arcari P.,et al.Nucleic Acids Res. 12:9179-9189(1984).  
Tso J.Y.,et al.Nucleic Acids Res. 13:2485-2502(1985).  
Tokunaga K.,et al.Cancer Res. 47:5616-5619(1987).  
Allen R.W.,et al.J. Biol. Chem. 262:649-653(1987).